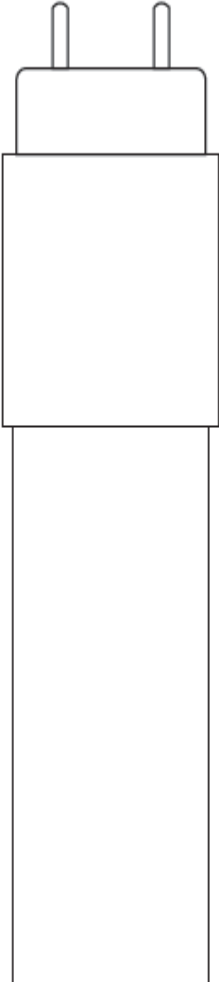


T8 AC mains Installation Instruction

- Packing Information

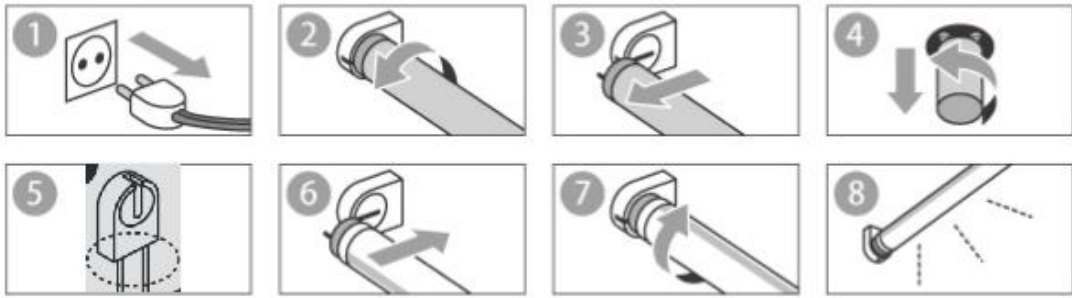
LED
T8 LED Tube



— 1x

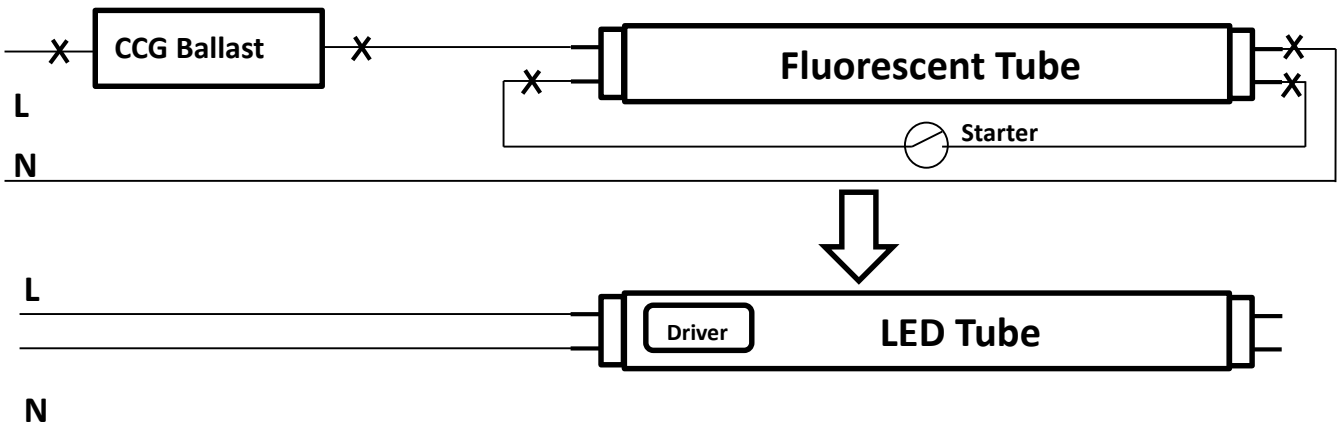
LED TUBE

● **Installation Steps** --- AC mains rewiring

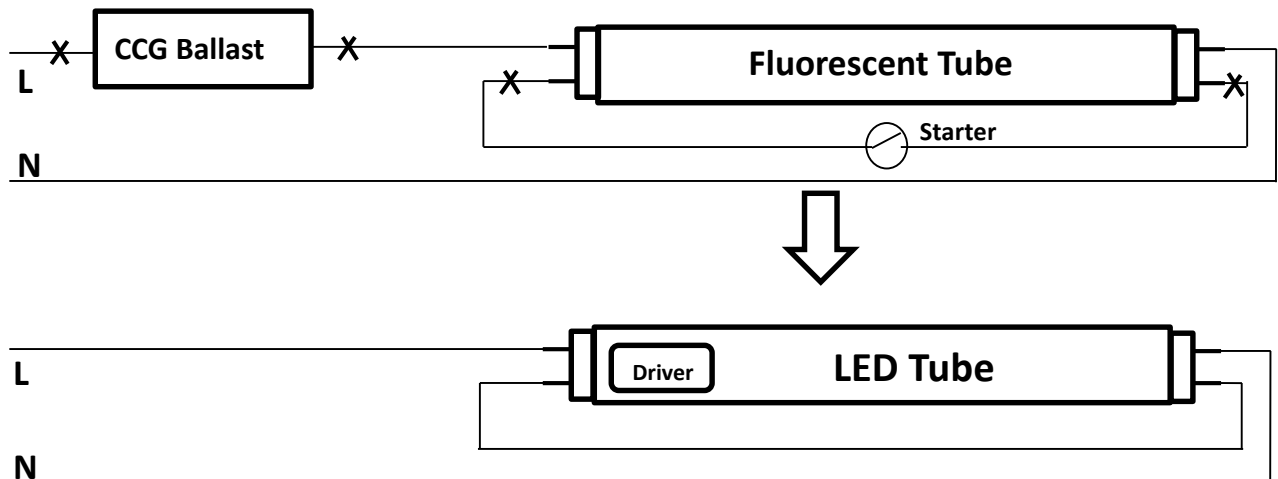


1. Switch off electricity;
2. Detach the conventional lamp from the fitting by turning 90° ;
3. Remove the conventional lamp;
4. Remove the starter;
5. Rewire as the circuit below (bypass ballast);
6. Insert the LED Tube into the lamp fitting;
7. Secure it in position by turning 90° ;
8. Switch on electricity.

● **Rewiring of a single circuit luminaire with magnetic ballast:**



● **Rewiring of a double circuit luminaire with magnetic ballast:**

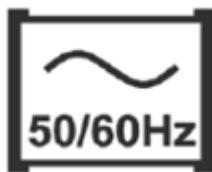


● Quick Installation Guide

- ✧ Always switch off the power supply before installation
- ✧ LED Tubes are intended for using in luminaires with conventional magnetic ballast or connect AC mains directly by rewiring;
- ✧ If there is compensation capacitor in the fixture, please remove it before install LED Tube.
- ✧ LED Tubes operate in temperatures from -10°C to +45°C
- ✧ Under dry conditions or in luminaires that provide correct protection
- ✧ LED Tubes are not dimmable
- ✧ LED Tubes are designed to fit IEC Compliant G13 bi-pin lamp holders
- ✧ All LED tubes must be installed by a professional electrician
- ✧ Do not change any components of the LED Tubes

● Declaration of the production

- Voltage range:220V-240VAC
- This lamp is not suitable to be used in emergency luminaires designed;
- This lamp may not be suitable for use in all applications where a traditional fluorescent lamp has been used. The temperature range of this lamp is more restricted. In cases of doubt regarding the suitability of the application the manufacturer of this lamp should be consulted.
- The length of LED Tube is designed according to IEC 60081.
- This lamp is designed for general lighting service (excluding e.g. explosive atmospheres)fluorescent tube



Lamp suitable for 50 Hz



Lamp not suitable for emergency operation



Lamp to be used in dry conditions or in a luminaire that provides protection



lamps are not suitable for dimming

General terms and conditions

- Never install wires over sharp edges in the luminaire
- Class II luminaires must keep the same level and strength of insulation after conversion.
- Connections to ground (earth) may not be removed in the luminaire.
- The IP rating of the luminaire may not be degraded after conversion

- Any direct or indirect damages that may occur during installation that is not performed according to this guide or by a qualified electrician is not under the liability of LEEDARSON
- Never change the structure of the LED Tubes
- Any luminaire converted to LED should be marked by a stamp indicating that it has been converted to LED Tubes
- Incorrect installation may cause failure and other problems with the installation
- Keep this guide for future maintenance.