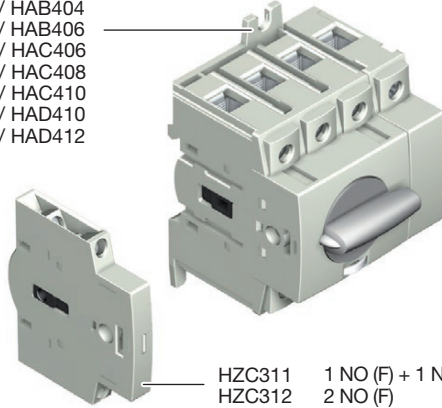


(EN) Auxiliary contact
(ZH) 辅助触点

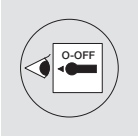


HAB302 / HAB402
HAB303 / HAB403
HAB304 / HAB404
HAB306 / HAB406
HAC306 / HAC406
HAC308 / HAC408
HAC310 / HAC410
HAD310 / HAD410
HAD312 / HAD412



HZC311
HZC312

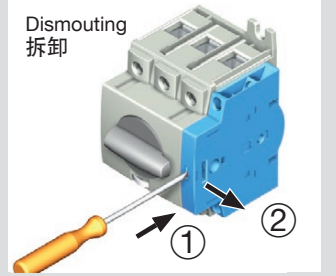
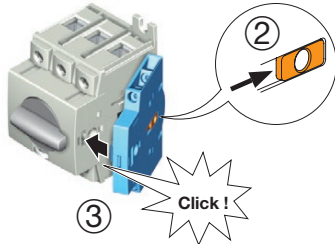
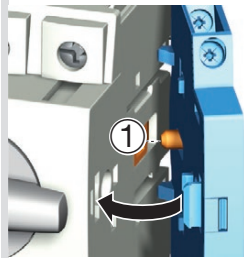
6H5120.d
HZC311
HZC312



HZC311
HZC312

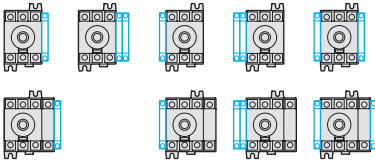
1 NO (F) + 1 NC (O)
2 NO (F)

maxi : 2 blocks
最多: 两块



Configuration
配置

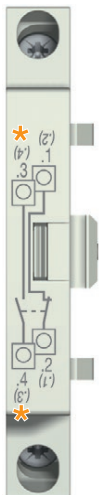
max: 2 blocks
最多: 两块



HZC312
2 NO

HZC311
NO + NC
Type ZA
ZA型

Same polarity
同一极性

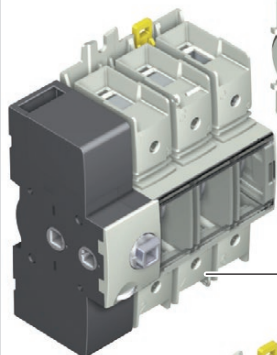


* PRE-BREAK
预分断



2 NO (F) maxi : 2 blocks
 1 NO (F) + 1 NC (O) 最多: 两块

HZC311
 HZC312



HAE310 / HAE410
 HAE312 / HAE412
 HAE316 / HAE416

HZC311
 HZC312



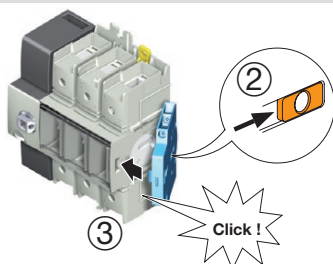
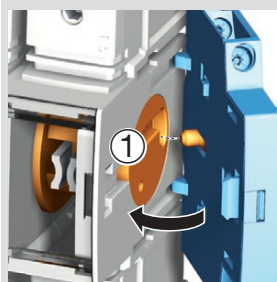
HAE310 / HAE410
 HAE312 / HAE412
 HAE316 / HAE416

HZC312
 2 NO

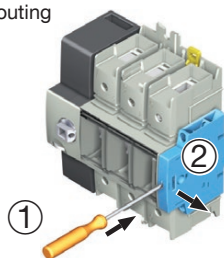
HZC311
 NO + NC Type ZA
 NO + NC ZA 型
 Same polarity
 同一极性



<p>5,5 0,8 Nm (1 Nm max) (最大 1Nm)</p>	<p>6 mm</p>
<p>PZ 1 0,8 Nm (1 Nm max) (最大 1Nm)</p>	<p>1 x 0,22 mm² 2 x 2,5 mm²</p>



Dismouting
 拆卸



HAZARDOUS VOLTAGE

This equipment must be installed and serviced only by qualified electrical personnel. Turn off all power supplying this equipment before working on or inside equipment. Always use a properly rated voltage sensing device to confirm power is off. Replace all devices, doors, and covers before turning on power to this equipment. Failure to follow these instructions will result in death or serious injury.



危险电压

此类装置必须由专业人员进行安装和维护，在电气装置上或内部进行操作前必须关掉所有外部供电电源。使用合适的额定电压测量装置来确认电源已经断开关闭。在电气装置关电前必须重新放好所有的部件、柜门和开关盖。不遵守以上预警将导致严重伤害或死亡。